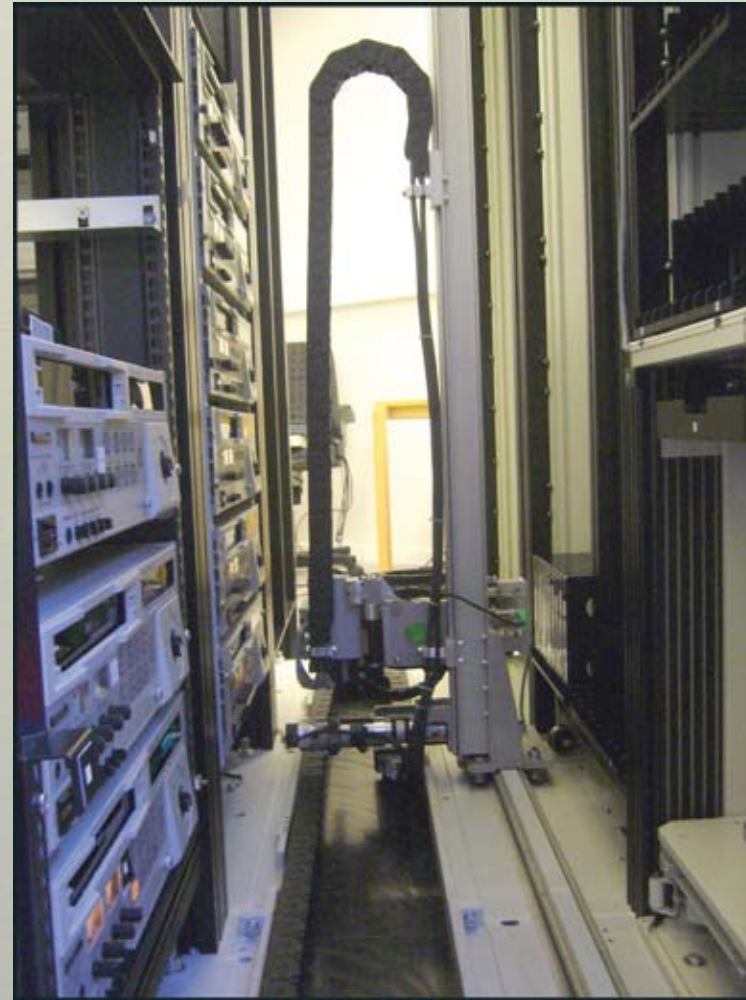


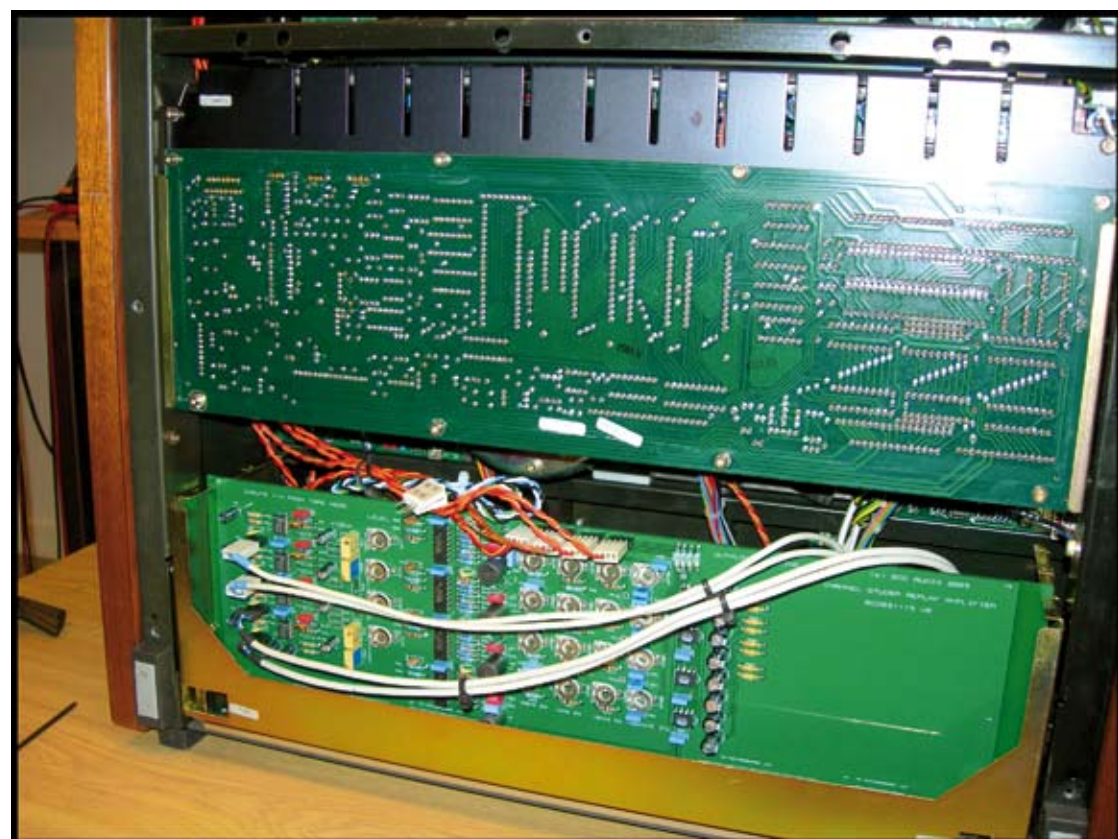
1.5 million hours of audio-visual material

to be migrated



During the year of 2006 SLBA has run a project to establish an infrastructure for mass migration of substantial parts of our analogue audio and video collections to digital files, which will subsequently be available online.

VIDEO AUTOMATION, 24 x 7



AUDIO HIGH-SPEED TRANSFER, 16 SIMULTANEOUS PLAYERS

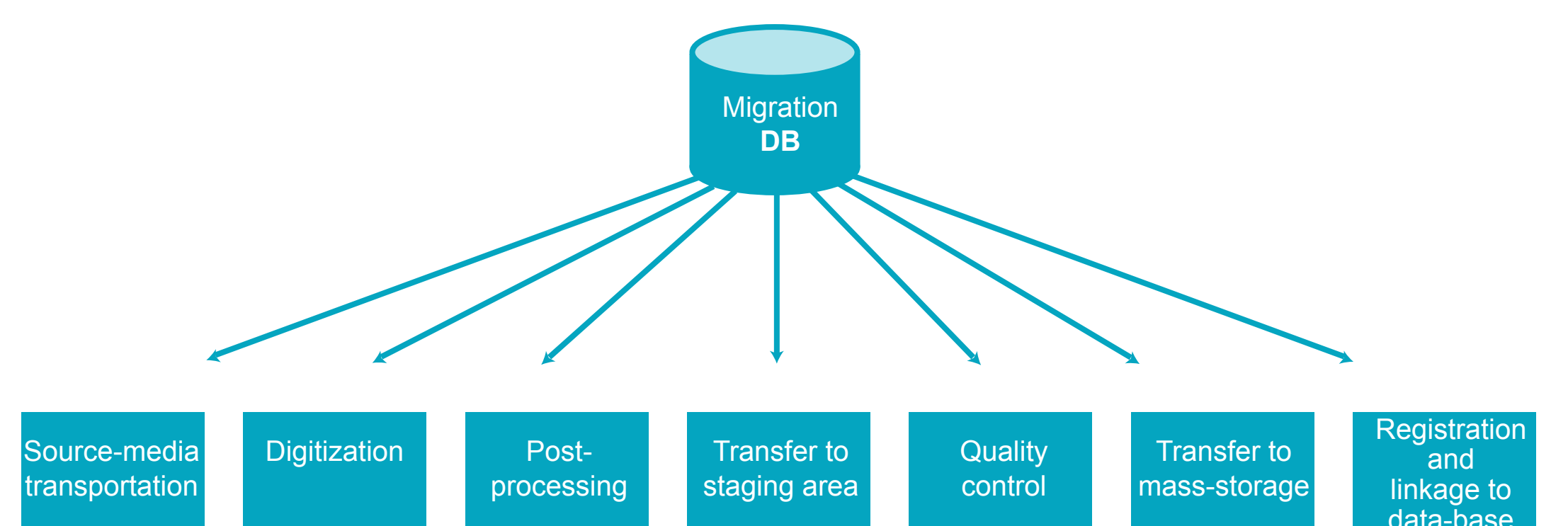
Presently two ¼ inch open-reel audio formats are being migrated to Broadcast Wave files at a rate of 1500 hours per day on one shift. An additional migration of 576 hours per day from the data-tape format QIC should be under way by January 2007.

Also by January 2007, we should have a robotic migration of VHS tapes to MPEG files underway at a rate of 252 hours per day through 12 VHS players running 24 hours per day and seven days a week. With the help of some external consultancy, we developed the robotic system by way of adapting a data-tape robot. Additionally, machine control software and quality control functions were built. Impending video formats to be automated are Digital Betacam and DVC-PRO.

All formats included we intend on migrating nearly 1.5 million hours in approximately 3 years and adding additional production lines as needed.

All formats, Totals					
	Video	Audio	Total		
Number of hours to be migrated	257 500	1 182 240	1 439 740		
Number of streams	20	72	92		
Aggregated bandwidth		Mb/sec	MB/sec		
		242	30		
Archive...Data quantities	GB/Hour	GB/Day	TB/Month	TB/Year	TB/Total
All streams	98,3	1 916,2	43,07	43,76	1 342,93
Browsing...Data quantities	GB/Hour	GB/Day	TB/Month	TB/Year	TB/Total
All streams	8,2	159,7	3,65	43,76	109,70
Total data quantities (archive & brows)	GB/Hour	GB/Day	TB/Month	TB/Year	TB/Total
All streams	106,5	2 075,9	46,72	87,51	1 452,63
Archive...Data-tape storage costs	SEK/Hour	SEK/Day	SEK/Month	SEK/Year	SEK/Total
All streams	442	8 623	198 472	2 381 661	6 188 231
Browsing...Disc storage costs	SEK/Hour	SEK/Day	SEK/Month	SEK/Year	SEK/Total
All streams	245	4 791	112 018	1 344 219	3 369 972
Total storage costs (archive & brows)	SEK/Hour	SEK/Day	SEK/Month	SEK/Year	SEK/Total
All streams	688	13 414	310 490	3 725 880	9 558 203
Hours transferred	Hour	Day	Month	Year	Total
All streams	92	2 482	53 093	637 110	1 439 740
					Required time to transfer (years)
					3,65

FLOW CONTROL



Other features of the infrastructure are a suite of custom scripts that process the digitized files as needed, and an in-house developed migration asset management system that handles both physical and logical material logistics including meta-data, final storage and linkage to the description database records.